

Netkit Software Installation Guide

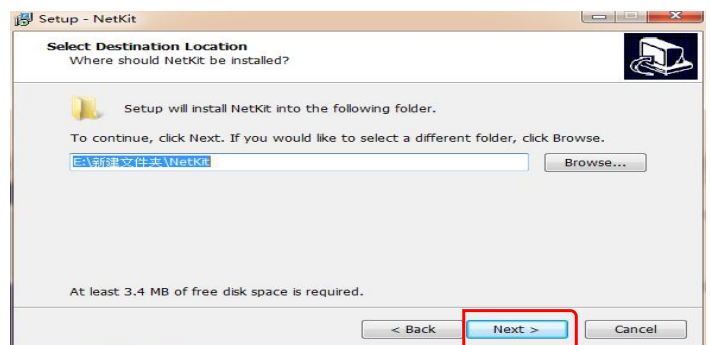
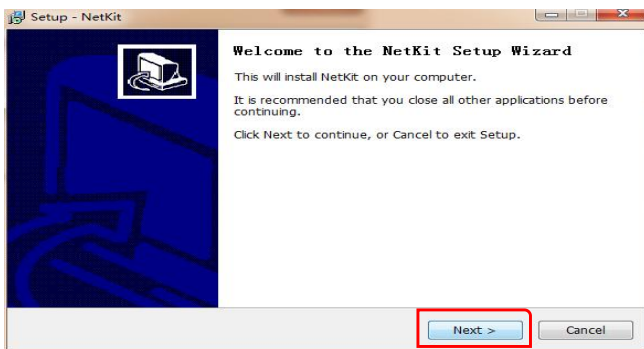


Netkit Package

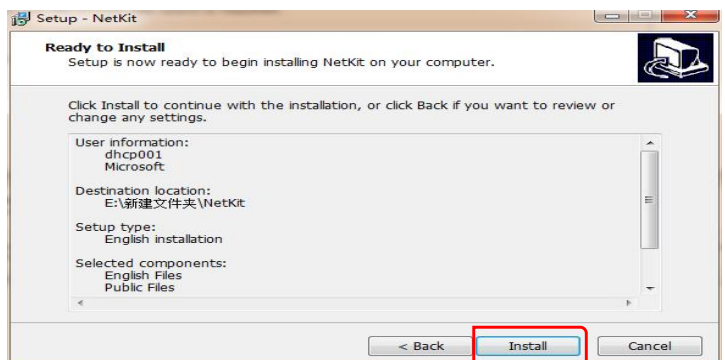
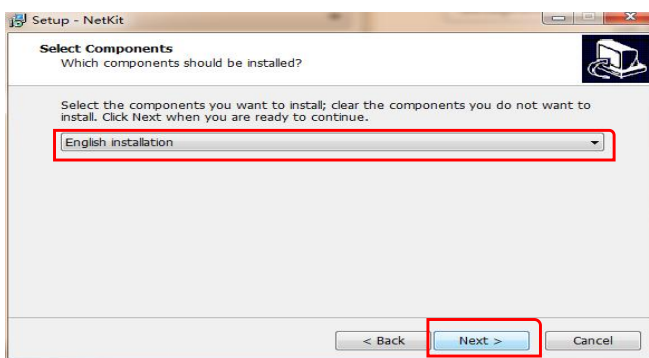
1. Double click “**setup.exe**”, select English, then click “**确定**”.



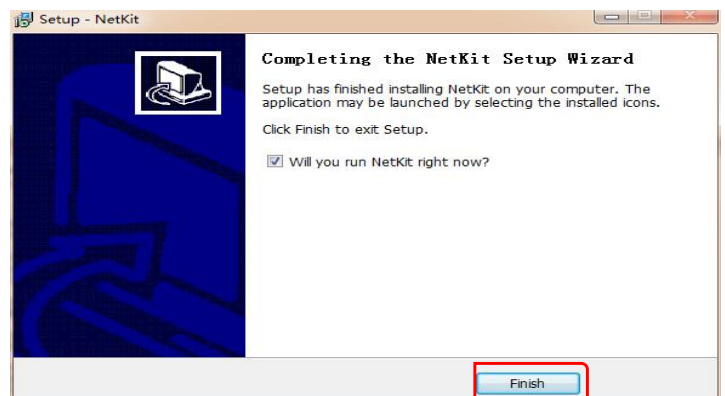
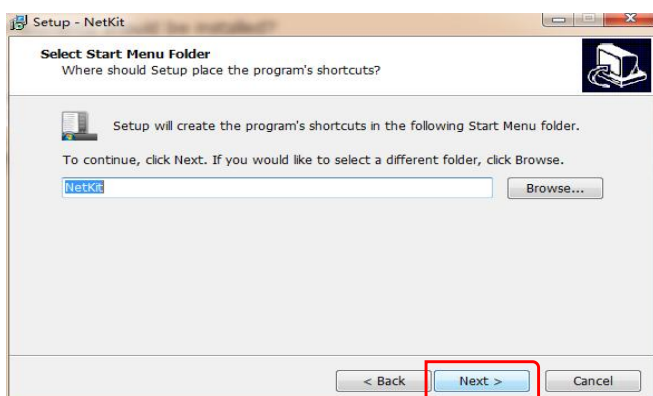
2. Click “**Next**”, browse the installed location, then click “**Next**”.



3. Select “**English installation**”, click “**Next**”, click “**Next**” again.



4. Click “**Next**”, click “**Finish**”.

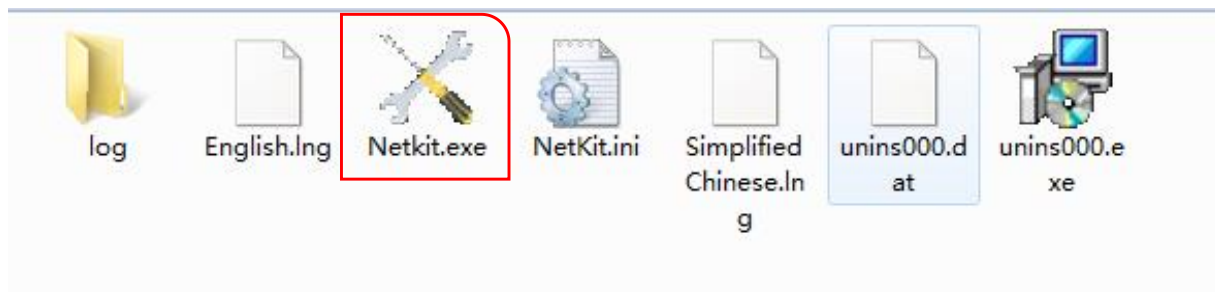


The way to use Netkit software

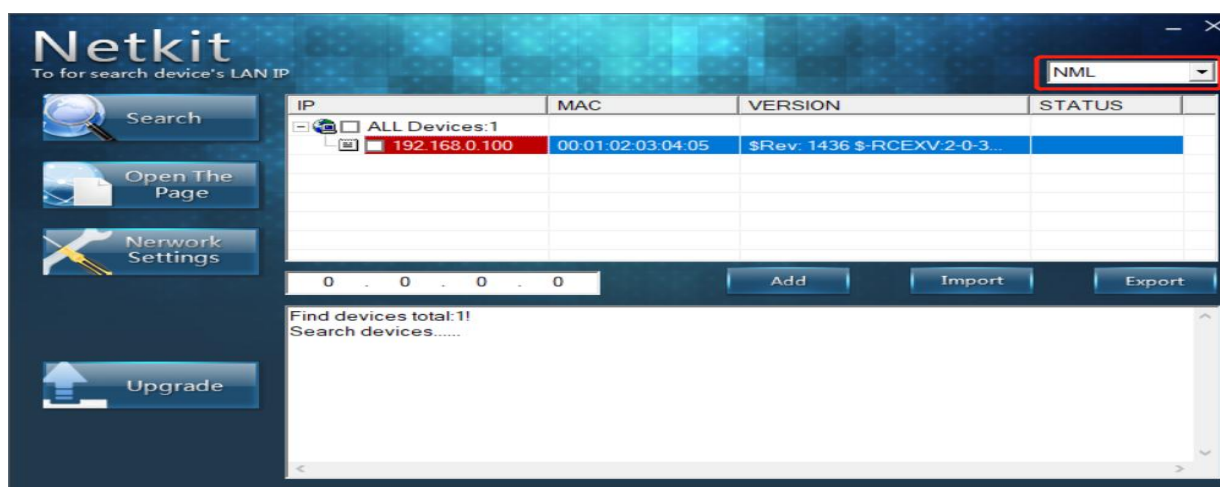
1. Connect the NetmateLite card to the computer with network cable.
2. Open “Netkit.exe”.



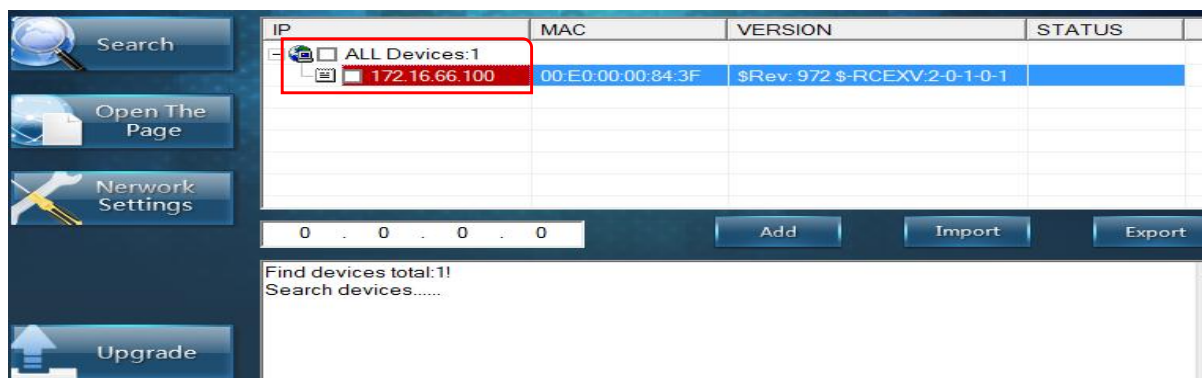
Netkit package



3. Select “NML” at the right top corner, and then click “Search”.



4. You will get its IP as follow.



4. You can also change its IP by clicking “Network Settings”.

